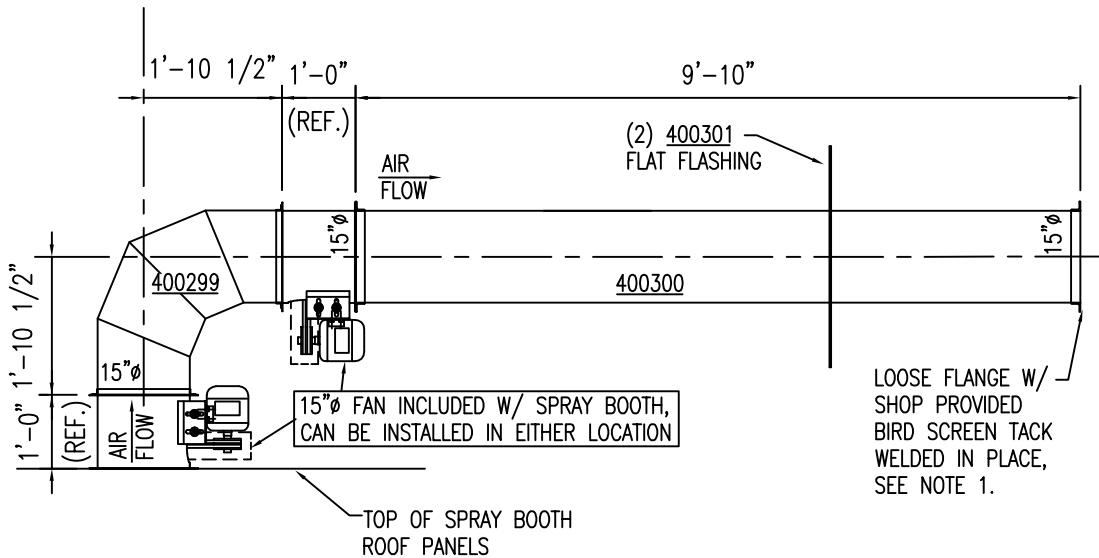


DESCRIPTION  
 S-SHOP SHIP  
 D-DROP SHIP  
 W-WITH ASS'Y.

# BILL OF MATERIAL

SHIPPING LIST						
MFG. CTR.	SBD	QTY	UNIT	PCS	W	DESCRIPTION
		1	PCS	S	400014	461 SB STACK 15' DIA THRU THE WALL
		1	PCS	W	400299	461 SB STACK 15' DIA 90 DEG ELBOW W/ FLANGES EACH END W/ (8) 7/16' DIA HOLES ON 16 1/8' DIA B. C. FLANGE HOLE PATTERN
		1	PCS	W	400300	461 SB STACK 15' DIA STRAIGHT WELDED STACK (1) FLANGE W/ (8) 7/16' DIA HOLES ON 16 1/8' DIA B. C. FLANGE HOLE PATTERN & W/ (1) FLANGE SHIPPED LOOSE (NO BOLT HOLES) W/ SHOP PROVIDED BIRD SCREEN TACK WELDED IN PLACE
		1	PCS	W	400301	461 SB STACK 15' DIA 18 GA ALUMZ' D FLAT FLASHING
		20	PCS	W	149996	461 FSTNR SCREW HH .375-16 X 1. ZN PLT GR 2
		10	PCS	W	127725	461 FSTNR SCREW CARRIAGE .375-16 X 1. ZN PLT
		30	PCS	W	30066	461 FSTNR NUT HEX .375-16 ZN PL
		30	PCS	W	33520	461 FSTNR WSH FLAT .375 ZN PL
		1	TUBE	W	68996	461 CMPD CAULKING ACRYLIC LATEX 10. 1-OZ WHITE
						HMIS 130B #850A - 12 PER CASE



**NOTES:**

1. 15"Ø STRAIGHT STACK DUCTWORK (#400300) CAN BE CUT TO LENGTH REQUIRED. LOOSE FLANGE W/ BIRD SCREEN IS TACK WELDED TO DUCT. BREAK WELDS AND FIELD CUT DUCT TO LENGTH REQUIRED. GRIND END OF DUCT SO THAT IT IS FREE OF ANY BURRS AND STITCH WELD FLANGE TO DUCTWORK 1" WELD LG ON 3" CENTERS.

GEORGE KOCH SONS, LLC  
 EVANSVILLE, IN 47744



SPRAY BOOTH STACK 15" DIA THRU THE WALL

ASSEMBLY AND BILL OF MATERIAL

This drawing and its designs are part of the intellectual property of GEORGE KOCH SONS, LLC. and may not be copied or used without the written permission of GEORGE KOCH SONS, LLC. This drawing, its designs and any information hereon may not be disclosed to any third party without the written permission of GEORGE KOCH SONS, LLC.

Date 11/14/07 | Part No. 400014 | Sketch No. 1 OF 1

Rev No. | Revision Description